

## THE IMMACULATE CONCEPTION OF BVM

## INTROIT

Is 61: 10

INTR. III

**G** Audens gaudé- bo \* in Dó- mi-no et exsultá-bit á- nima me- a in De- o  
 me- o: qui- a índu-it me vestimén- tis sa-lú- tis, et indumén-to justí- ti- æ cir-  
 cúm-dedit me, qua-si spon-sam orná- tam mo-ní- li-bus su- is. Ps. Exaltábo te, Dómine, quóni- am  
 suscep-si me: \* nec de-lectásti in-imí-cos me- os super me. Gló-ri- a Patri. E u o u a e.

## GRADUAL

Judith 13: 23, 15, 10

v

**B** enedícta es tu, Virgo Ma-rí- a, a Dómino De-o excélso, \* præ ómnibus mu-li- é-ribus super  
 terram. 2. Tu gló-ri- a Je-rú-sa-lem, tu læ-tí-ti- a Isra-ël, \* tu hono-ri-fi-cénti- a pópu-li nostri.

## ALLELUIA

Cant 4: 7

I

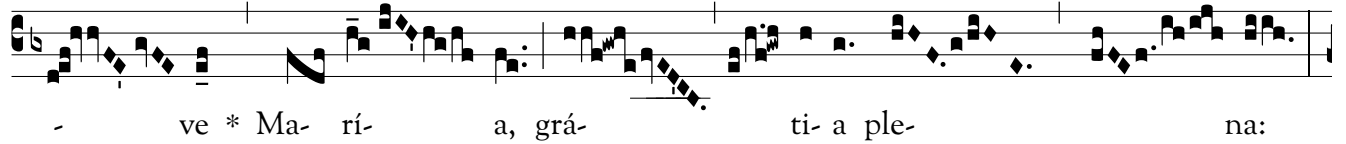
**A** L- le- lú- ia. \* ij. ŷ. To- ta pulchra es, Ma-rí-  
 a: \* et mácu- la o-ri- giná- lis non est in te.

# OFFERTORY

Luc I: 28

OFFERT.  
VIII

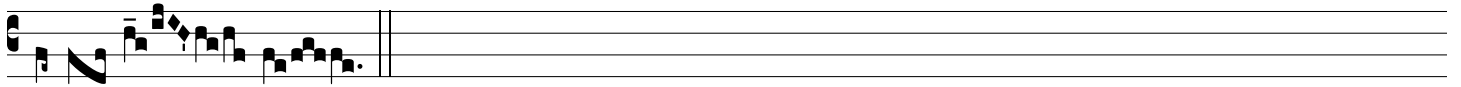
**A**



ve \* Ma- rí- a, grá- ti- a ple- na:



Dó- minus te- cum: be-ne-díc- ta tu in mu-li- é- ribus,

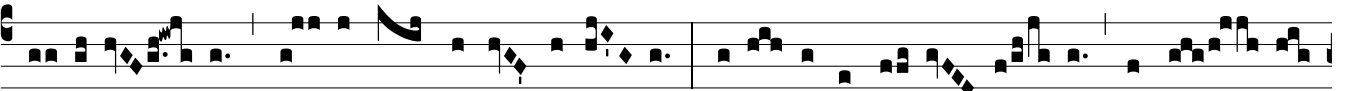


alle- lú- ia.

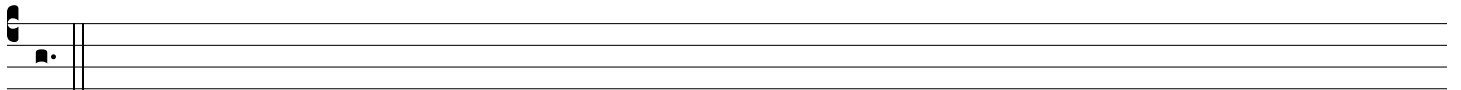
# COMMUNION

COMM.  
VIII

**G**



Lo- ri- ó- sa \* dic- ta sunt de te, Ma- rí- a: qui- a fe- cit ti- bi ma- gna qui pot- ens



est.