

1ST SUNDAY IN LENT

INTROIT

Ps 90: 15, 16, 1

I^{INTR. VIII.} Nvocá- bit me, * et e- go exáu- di- am e- um: e- rí- pi- am e- um, et glo- ri- fi- cá- bo e- um: longi- túdine di- é- rum ad- implé- bo e- um. *Ps.* Qui há- bi- tat in adju- tó- ri- o Altíssimi, * in pro- tecti- óne De- i cæ- li com- mo- rá- bi- tur. Gló- ri- a Patri, et Fí- li- o, et Spi- rí- tu- i Sancto. * Sic- ut e- rat in prin- cí- pi- o, et nunc, et semper, et in sæ- cu- la sæ- cu- ló- rum. Amen.

GRADUAL

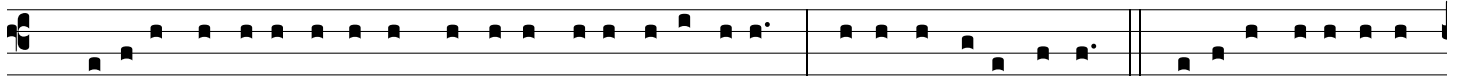
Ps 90: 11-12

A^{GRAD. II.} Nge- lis su- is mandá- vit de te, * ut custódi- ant te in ómnibus vi- is tu- is. 2. In máni- bus portábunt te, ne unquam offé- ndas * ad lá- pidem pedem tu- um.

TRACT

Ps 90: 1-7, 11-16

Q^{TRACT. II.} UI há- bi- tat in adju- tó- ri- o Altíssimi, * in pro- tecti- óne De- i cæ- li com- mo- rá- bi- tur. 2. Di- cet Dómino: Suscéptor me- us es, * et re- fú- gi- um me- um, De- us me- us: spe- rábo in e- um.



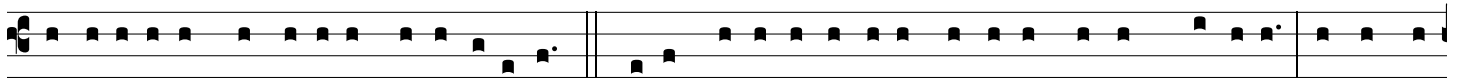
3. Quóni- am ipse li-be-rá-vit me de láque-o venánti-um, * et a verbo áspe-ro. 4. Scápu-lis su-is obum-



brá-bit ti-bi, * et sub pennis e-jus spe-rá-bis. 5. Scu-to circúm-da-bit te vé-ri-tas e-jus: * non timé-bis



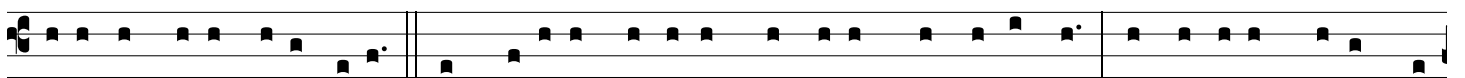
a timó-re noctúrno. 6. A sa-gítta vo-lánte per di-em, † a negó-ti-o per-ambu-lánte in ténebris, *



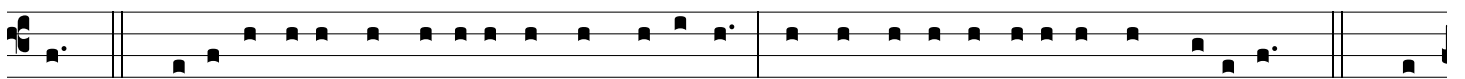
a ru-ína et dæmóni-o me-ri-di-áno. 7. Cadent a lá-te-re tu-o mil-le, et de-cem míl-li-a * a dextris



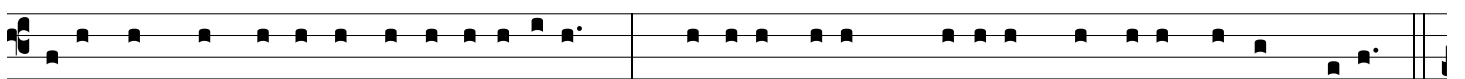
tu-is: ti-bi autem non appropinquá-bit. 8. Quóni- am Ange-lis su-is mandá-vit de te, * ut custódi-ant



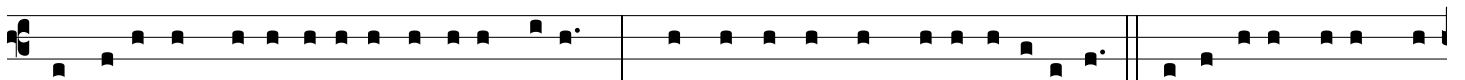
te in ómnibus vi-is tu-is. 9. In má-nibus portábunt te, ne unquam offénda-s * ad lá-pidem pedem tu-



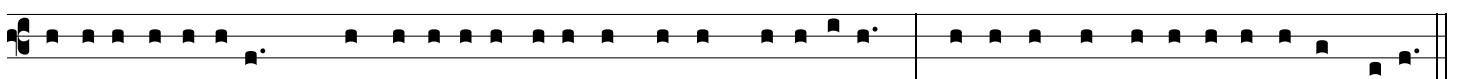
um. 10. Super áspidem et ba-si-líscum ambu-lá-bis, * et conculcá-bis le-ónem et dracónem. 11. Quón-



i- am in me spe-rá-vit, li-be-rábo e-um: * pró-tegam e-um, quóni- am cognóvit nomen me-um.



12. Invocá-bit me, et ego exáudi-am e-um: * cum ipso sum in tribu-la-ti-óne. 13. E-rí-pi-am e-um, et



glo-ri-fi-cábo e-um: † longi-túdine di-é-rum ad-implébo e-um, * et osténdam il-li sa-lu-tá-re me-um.

OFFERTORY

Ps 90: 4-5

OFFERT.
VIII



S

Cápu-lis su- is * obumbrá- bit ti-bi Dómi- nus, et sub pen-nis e-jus spe- rá-



bis: scu- to circúmda- bit te vé- ri-tas e- jus.

COMMUNION

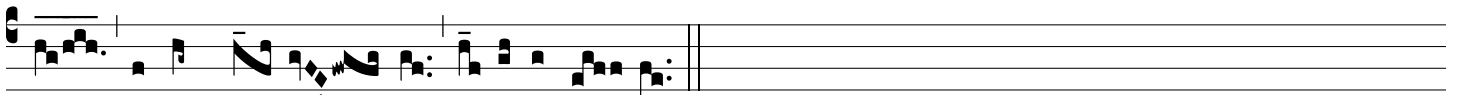
Ps 90: 4-5

COMM.
III



S

Cá- pu-lis su- is * obumbrá- bit ti- bi, et sub pen- nis e-jus spe- rá- bis: scu-



to circúmda- bit te vé-ri-tas e- jus.