

CHRISTMAS EVE

INTROIT

Exodi 16: 6, 7

INTR. VI

H O- di- e sci- é- tis, * qui- a vé- ni- et Dóminus, et salvá- bit nos: et ma- ne vidé- bi-
tis gló- ri- am e- jus. Ps. Dómi- ni est terra, et pleni- túdo e- jus: * orbis terrá- rum, et uni- vérsi qui
há- bi- tant in e- o. Gló- ri- a Patri, et Fí- li- o, et Spi- rí- tu- i Sancto. * Sic- ut e- rat in princi- pí- o,
et nunc, et semper, et in sæcu- la sæcu- ló- rum. Amen.

GRADUAL

Exodi 16: 6, 7

GRAD. II

H O- di- e * sci- é- tis, qui- a vé- ni- et Dó- mi- nus, et salvá-
bit nos: et ma- ne vidé- bi- tis gló- ri- am e- jus.
̎. Qui re- gis Isra- el, intén- de: qui dedú- cis
vel- ut ovem Jo- seph: qui se- des super Ché- rubim, ap- pá-
re co- ram Ephra- im, Bénjamin, * et Ma- násse.

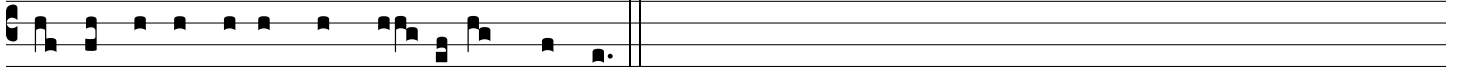
ALLELUIA

VIII

A

L-le-lú-ia. * ij.

ÿ. Crásti-na di-e de-lé-bi-tur in-íqui-tas terræ: *



et regná-bit super nos Sal-vá-tor mundi.

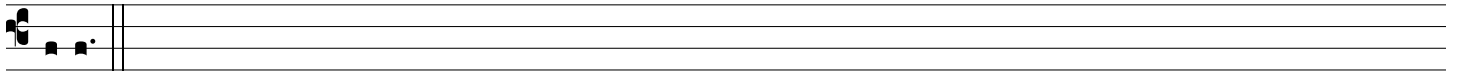
OFFERTORY

Ps 23: 7

OFFERT.
II

T

Olli-te portas, príncipes, vestras: et e-levámi-ni, * portæ æterná-les, et intro-í-bit Rex gló-



ri-æ.

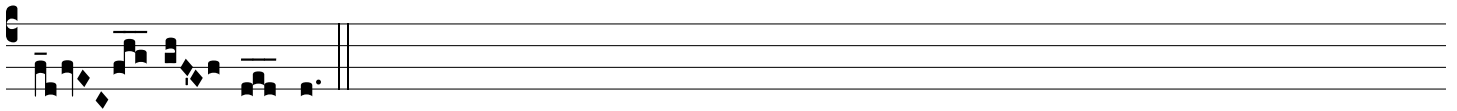
COMMUNION

Is 40: 5

COMM.
I

R

E-ve-lá-bi-tur * gló-ri-a Dó-mi-ni: et vi-dé-bit om-nis ca-ro sa-lu-tá-re



De-i nos-tri.