

CORPUS CHRISTI

INTROIT

Ps 80: 17, 2

C ^{INTR.}_{II} I-bá-vit e-os ex ádi-pe fruménti, alle-lú-ia: et de petra, melle sa-tu-rá-vit e-os, * al-le-lú-ia, alle-lú-ia, al-le-lú-ia. Ps. Exsultá-te De-o adju-tó-ri nostro: * ju-bi-lá-te De-o Ja-cob. Gló-ri-a Pa-tri, et Fí-li-o, et Spi-rí-tu-i San-cto. * Sic-ut e-rat in prin-cí-pi-o, et nunc, et semper, et in sæcu-la sæcu-ló-rum. Amen.

GRADUAL

Ps 144: 15-16

O ^{GRAD.}_{VII} -cu-li ómni-um in te spe-rant, Dómine: * et tu das il-lis escam in témpo-re oportúno.

2. Ape-ris tu manum tu-am: * et imples omne ánim-al benedicti-ó-ne.

ALLELUIA

Joann 6: 56-57

A ^{VII} L-le-lú-ia, Alle-lú-ia. ꝥ. Ca-ro me-a ve-re est cibus, et sangui-s me-us ve-re est po-tus: qui mandúcat me-am carnem, et bi-bit me-um sán-gui-nem, * in me manet, et ego in e-o, Alle-lú-ia.

SEQUENCE - LAUDA SION

SEQ.
VII

Lauda Si-on Salva-tó-rem, Lauda ducem et pastó-rem, In hymnis et cánti-cis. 2. Quantum pot-es,

tantum aude: Qui-a ma-jor omni laude, Nec laudá-re súffi-cis. 3. Laudis thema spe-ci-á-lis, Panis

vivus et vi-tá-lis Hódi-e propóni-tur. 4. Quem in sacræ mensa cœ-næ, Turbæ fratrum du-odénæ

Da-tum non ambí-gi-tur. 5. Sit laus plena, sit sonó-ra, Sit jucúnda, sit decó-ra Mentis jubi-lá-ti-o.

6. Di-es e-nim so-lémnis á-gi-tur, In qua mensæ prima recó-li-tur Hu-jus insti-tú-ti-o. 7. In hac

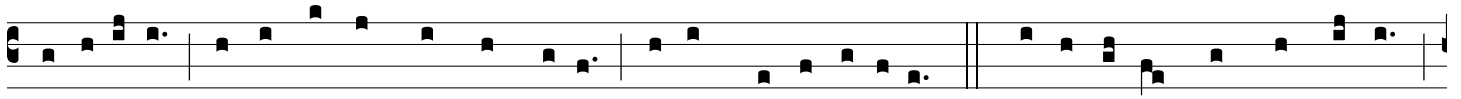
mensa no-vi Re-gis, Novum Pascha novæ le-gis, Pha-se ve-tus términat. 8. Ve-tustá-tem nóvi-tas,

Umbram fu-gat vé-ri-tas, Noctem lux e-líminat. 9. Quod in cœna Christus gessit, Fa-ci-éndum hoc

exprésit In su-i memó-ri-am. 10. Docti sacris insti-tú-tis, Panem, vinum in sa-lú-tis Consecrámus

hósti-am. 11. Dogma da-tur christi-ánis, Quod in carnem transit panis, Et vinum in sánguinem.

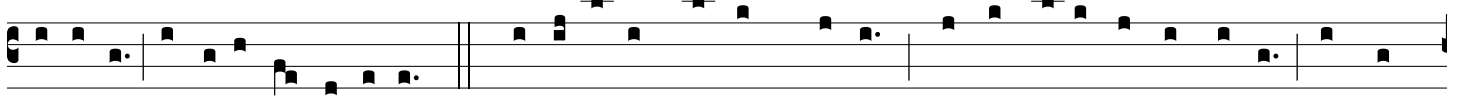
12. Quod non ca-pis, quod non vides, Animó-sa firmat fides, Præter re-rum ór-dinem. 13. Sub di-vérsis



spe-ci-ébus, Signis tantum, et non rebus, La-tent res ex-ími-æ. 14. Ca-ro ci-bus, sanguis po-tus:



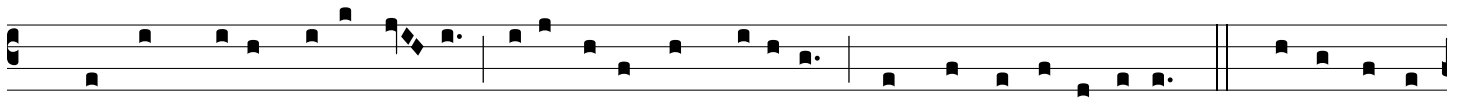
Manet tamen Christus to-tus Sub utrâque spé-ci-e. 15. A suménte non concí-sus, Non confráctus, non



di-ví-sus: Integer ac-cí-pi-tur. 16. Sumit unus, sumunt mil-le: Quantum isti, tantum il-le: Nec sump-



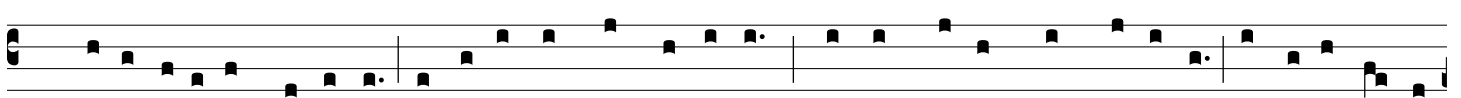
tus consúmi-tur. 17. Sumunt boni, sumunt ma- li: Sorte tamen inæquá-li, Vi-tæ vel inté-r-i-tus.



18. Mors est ma-lis, vi-ta bo- nis: Vide pa-ris sumpti-ónis Quam sit dispar éx-i-tus. 19. Fracto demum



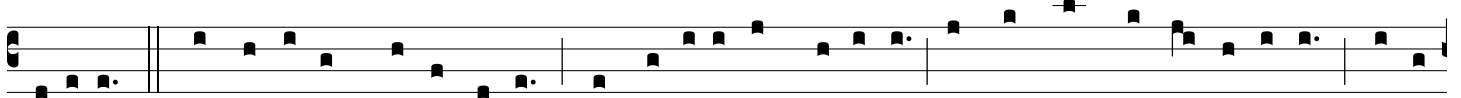
sacraménto, Ne va-cí-les, sed meménto Tantum esse sub fragménto, Quantum to-to té-gi-tur.



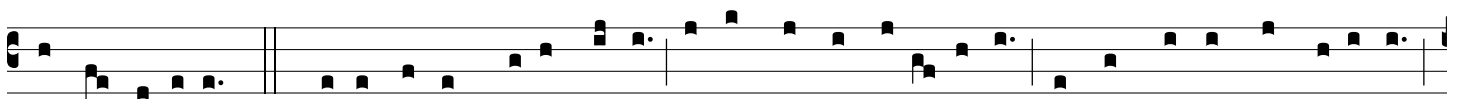
20. Nulla re-i fit scissú-ra: Signi tantum fit fractú-ra, Qua nec sta-tus, nec sta-tú-ra Signá-ti mi-nú-



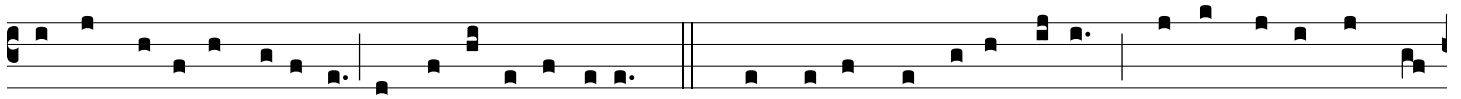
i-tur. 21. ECCE PANIS ANGELÓRUM, Factus cibus vi-a-tórum: Ve-re panis fi-li-órum, Non mitténdus



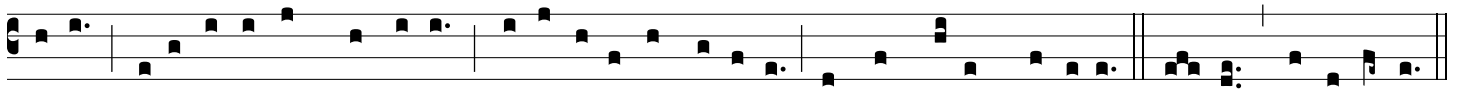
cánibus. 22. In fi-gú-ris præ-signá-tur, Cum I-sa-ac immo-lá-tur, Agnus Paschæ de-pu-tá-tur, Da-tur



manna pátribus. 23. Bone pastor, panis ve-re, Je-su, nostri mi-se-ré-re: Tu nos pasce, nos tu-é-re,



Tu nos bona fac vidé-re In terra vi-vénti-um. 24. Tu qui cuncta scis et va-les, Qui nos pascis hic mor-

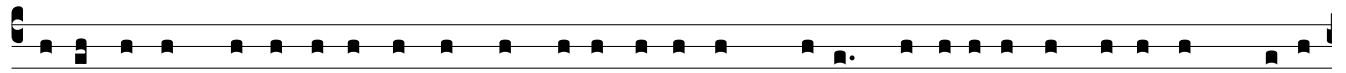


tá-les: Tu-os i-bi commensá-les, Cohe-rédes et sodá-les Fac sanctorum cí-vi-um. A-men. (Alle-lú-ia.

OFFERTORY

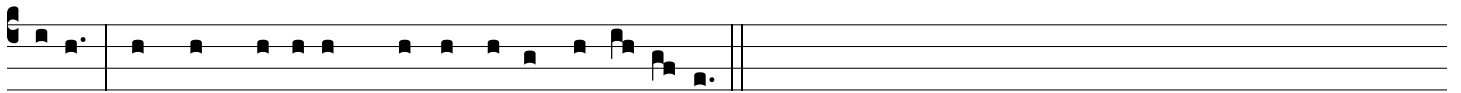
Levit 21: 6

OFFERT.
IV



S

Acerdó-tes Dómi-ni incénsum et panes óffe-runt De-o: † et íde-o sancti e-runt De-o

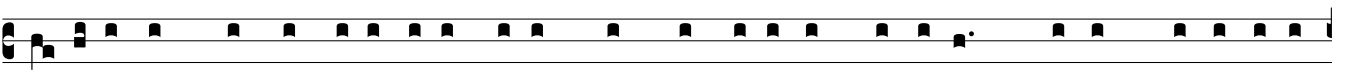


su-o, * et non póllu-ent nomen e-jus, al-le-lú-ia.

COMMUNION

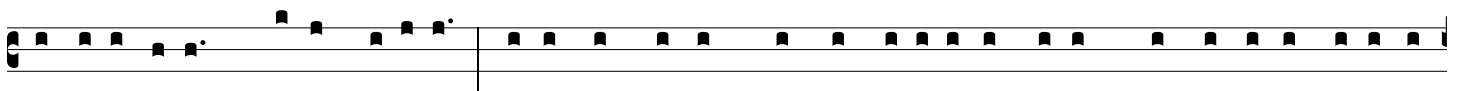
1 Cor II: 26-27

COMM.
VII

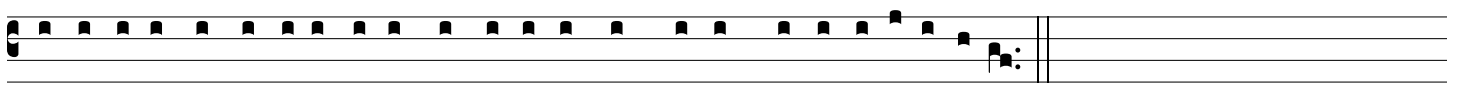


Q

Uo-ti- escúmque manducá-bi-tis panem hunc, et cá-li-cem bi-bé-tis, † mortem Dómi-ni an-



nunti- á-bi-tis, † donec véni- at: * í-taque qui-cúmque manducáve-rit panem, vel bí-be-rit cá-li-cem



Dómi-ni indigne re-us e-rit córpo-ris et sánqui-nis Dómi-ni, alle-lú-ia.